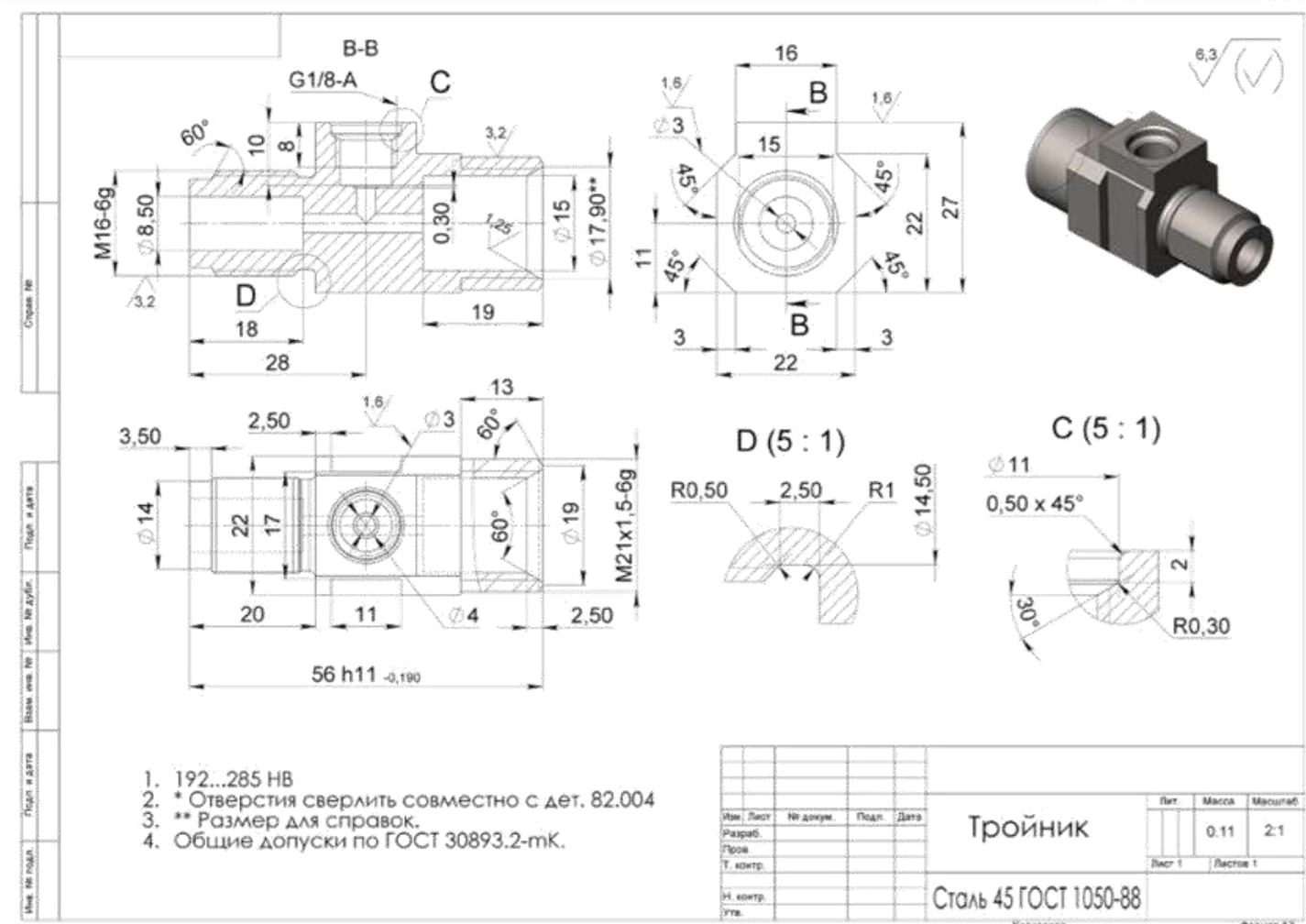
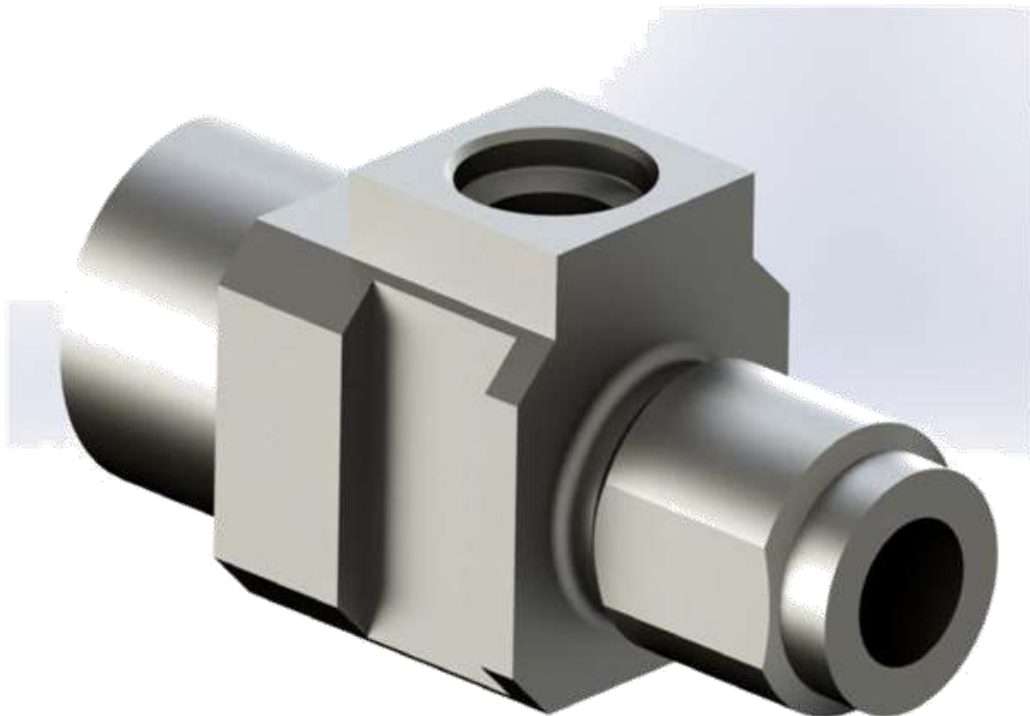
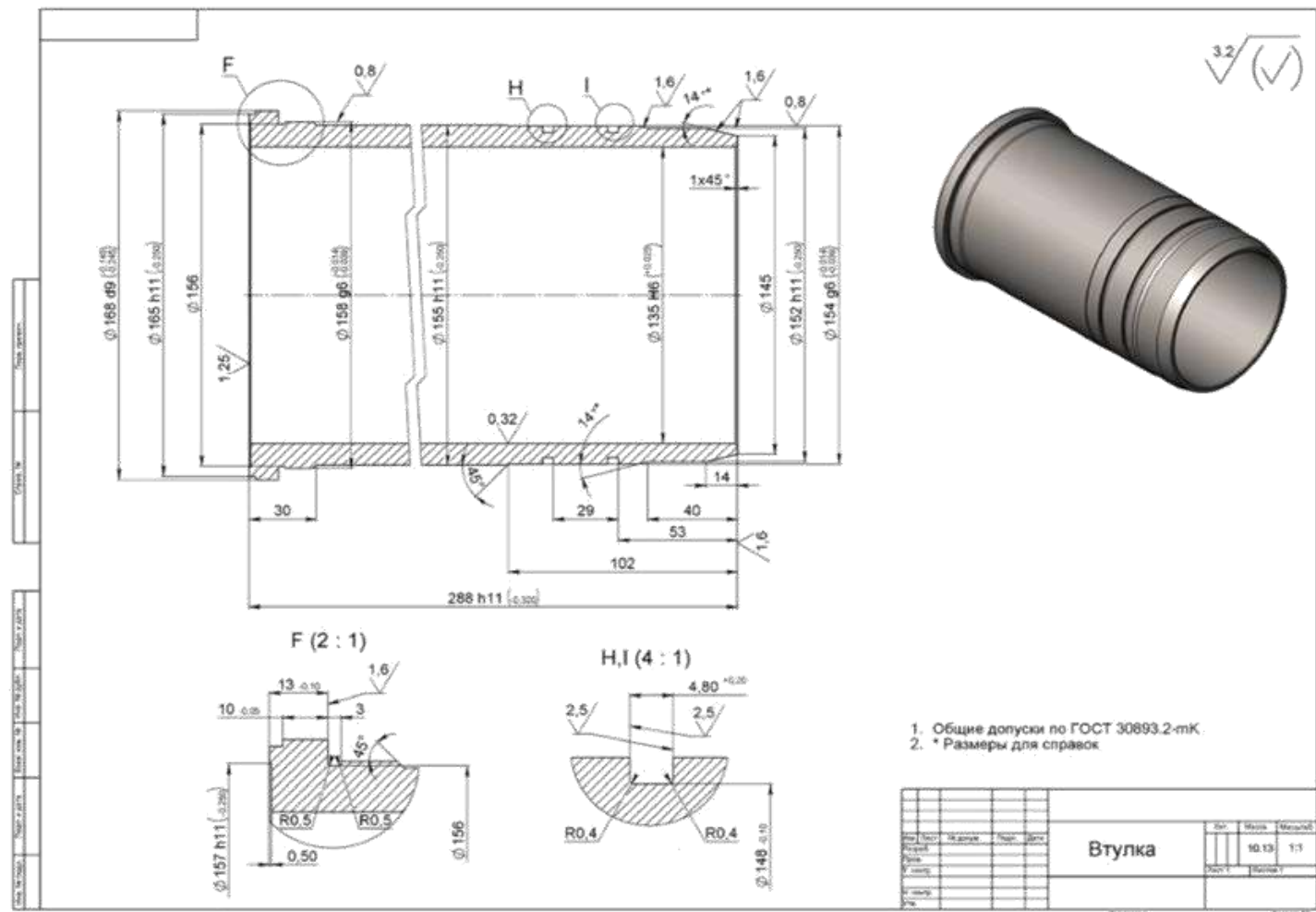


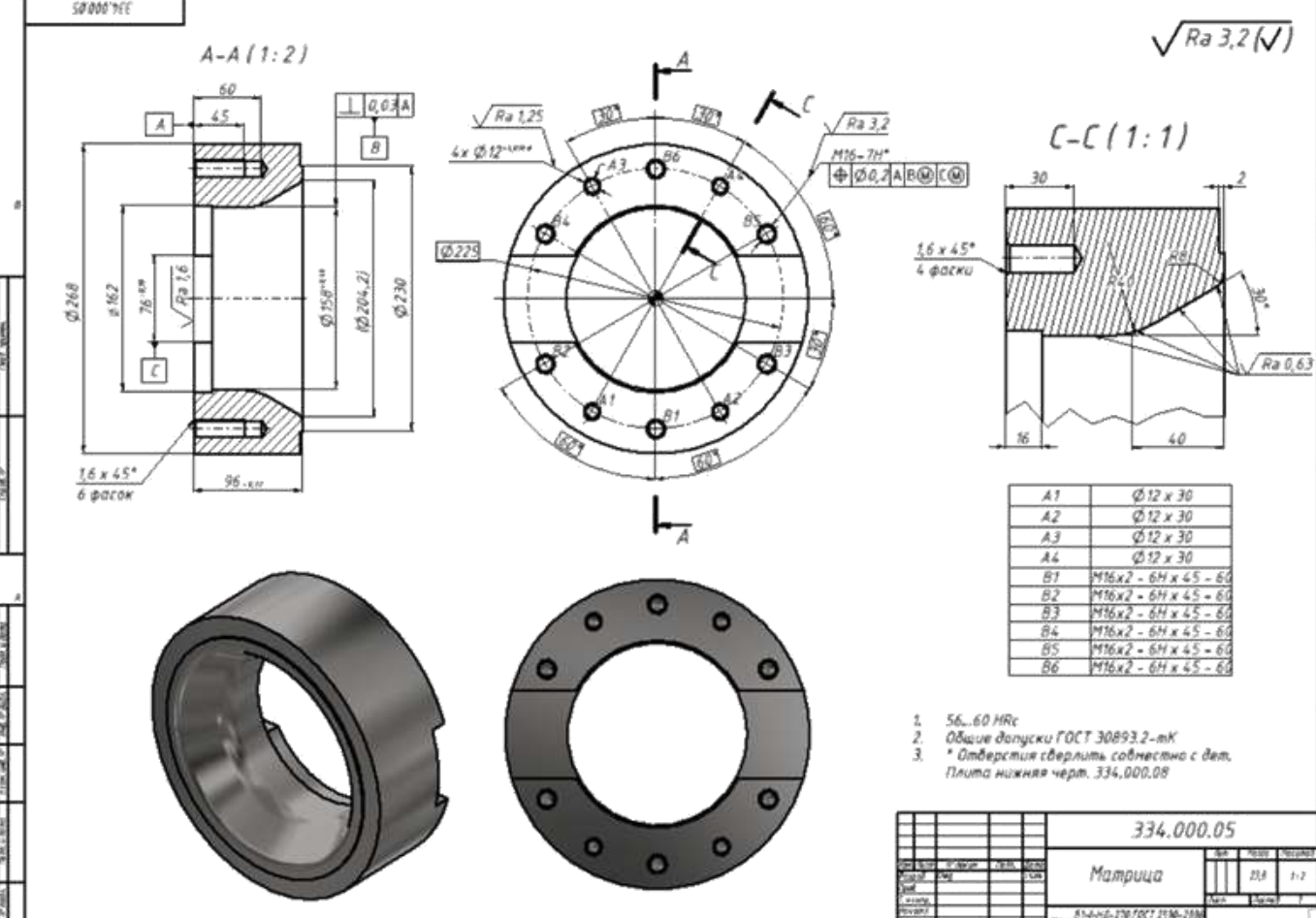
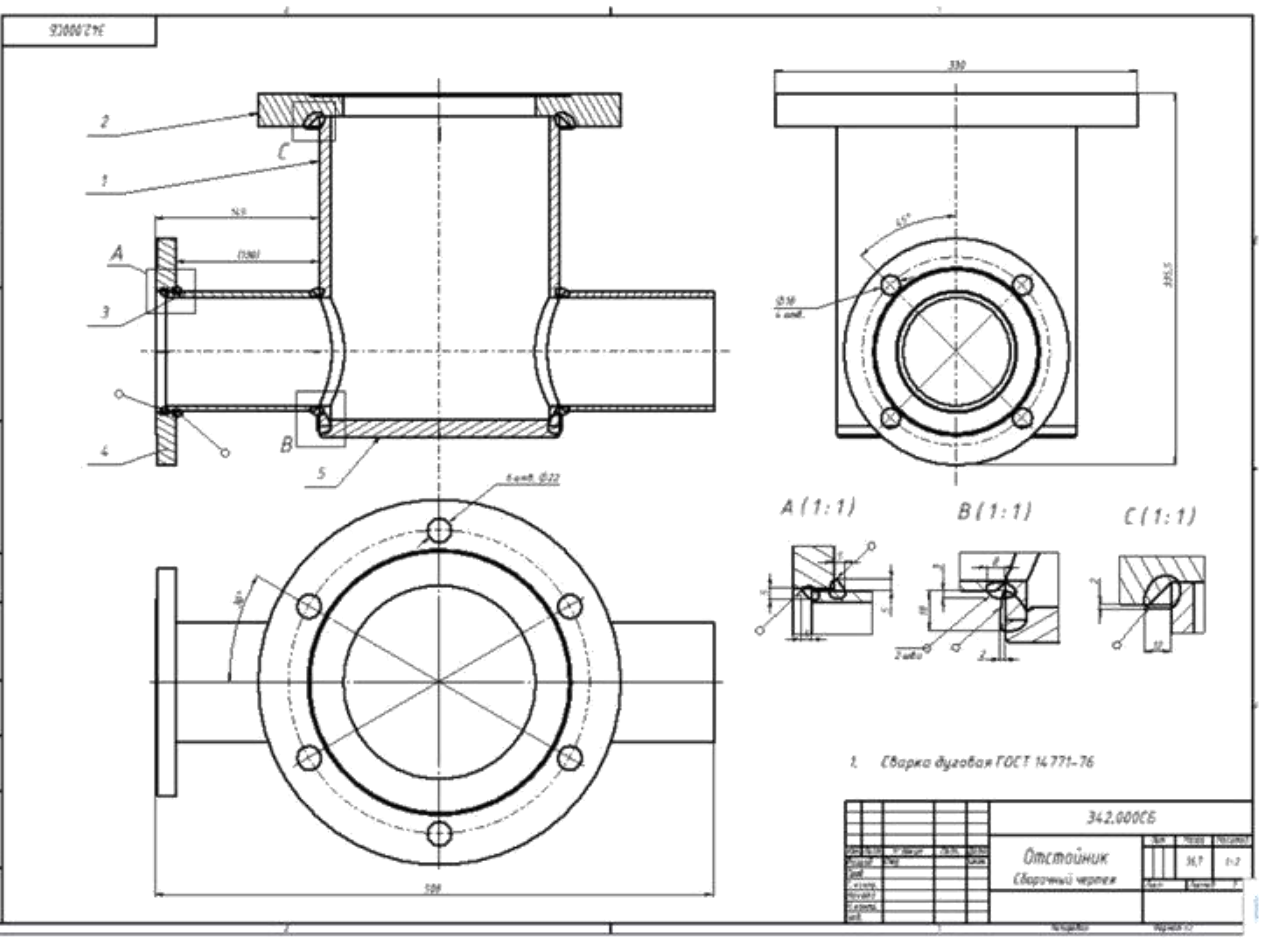
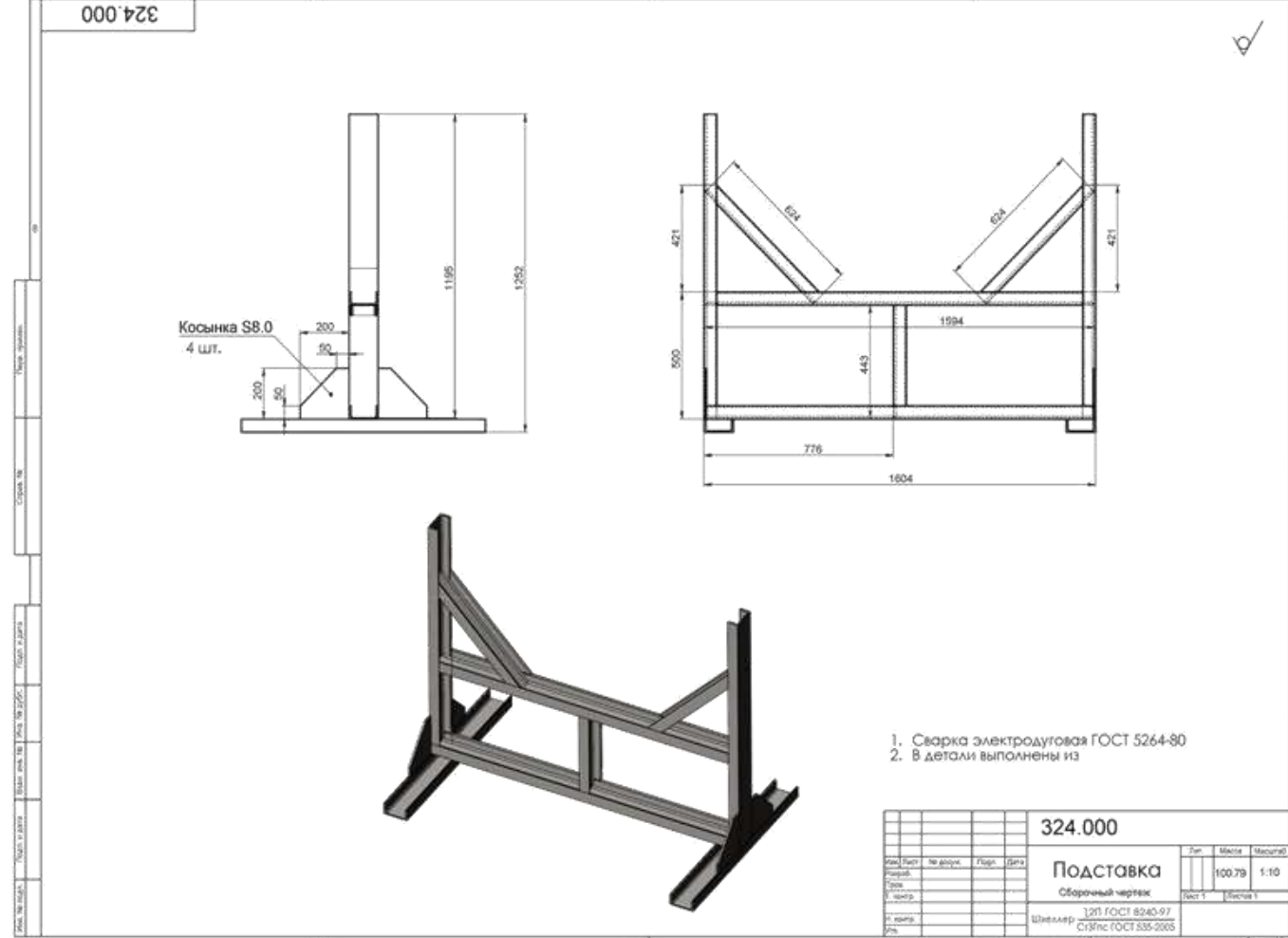
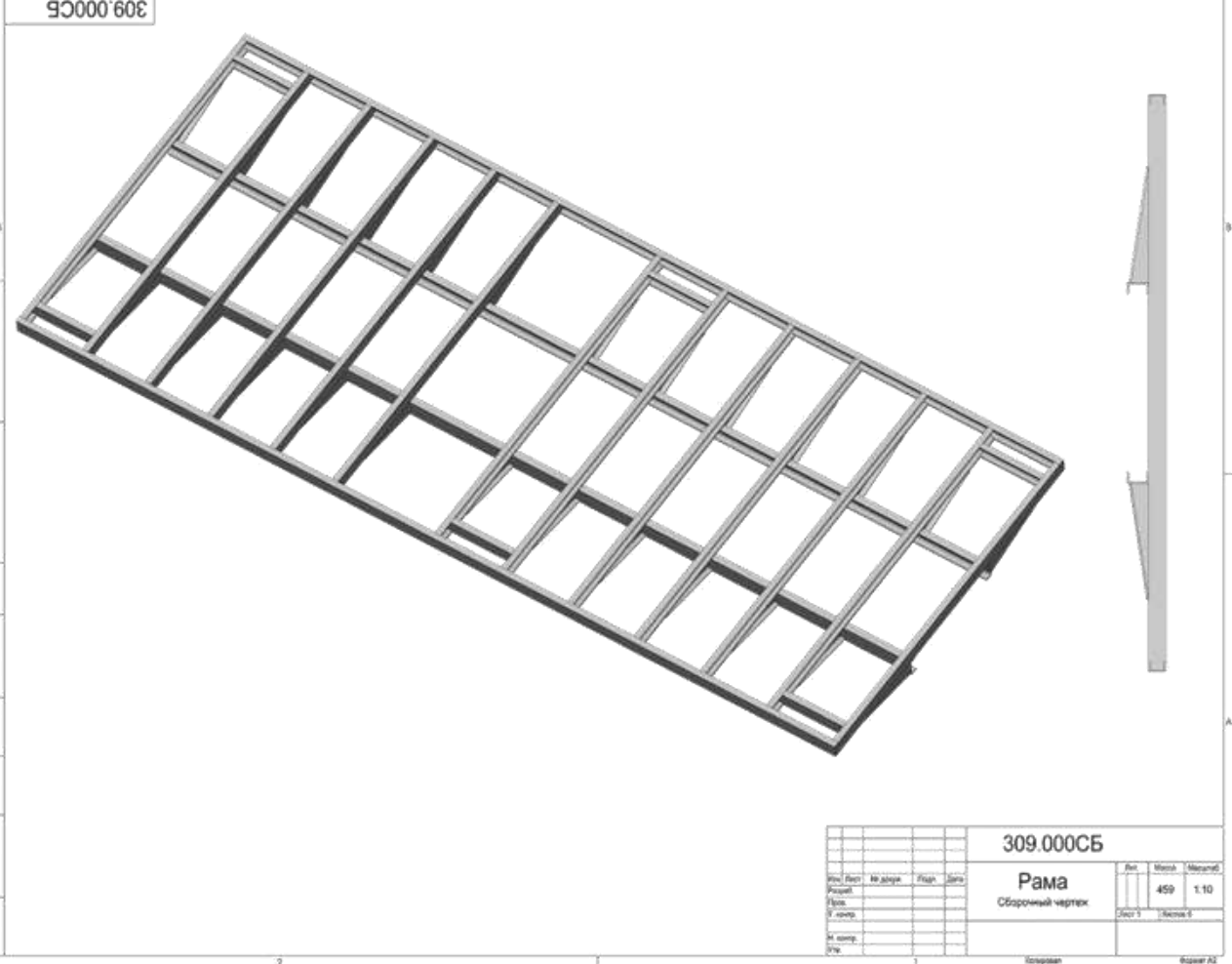
The addition for resume part 1

# Models and drawings made in SolidWorks, KOMPAS 3D, Autodesk Inventor

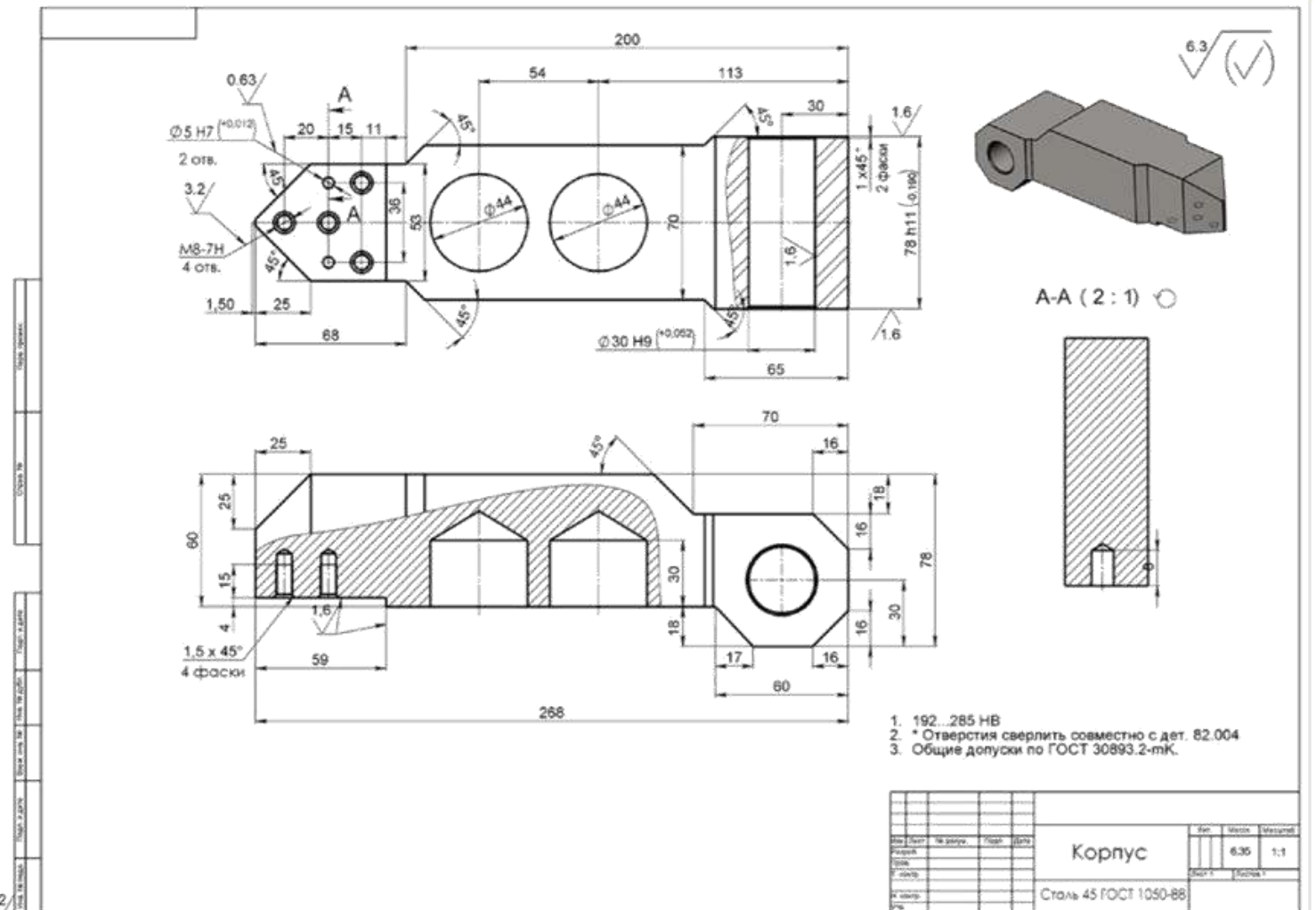
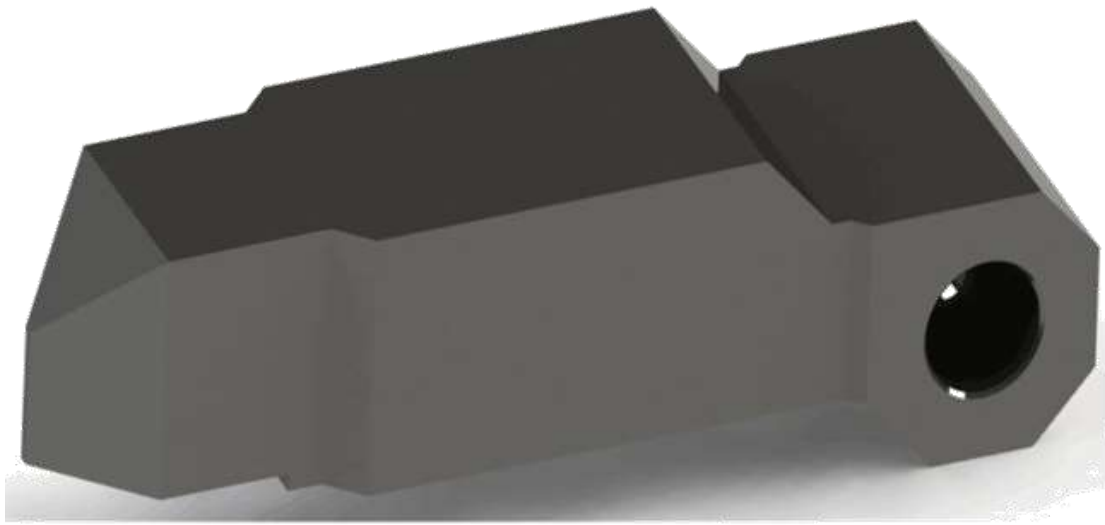
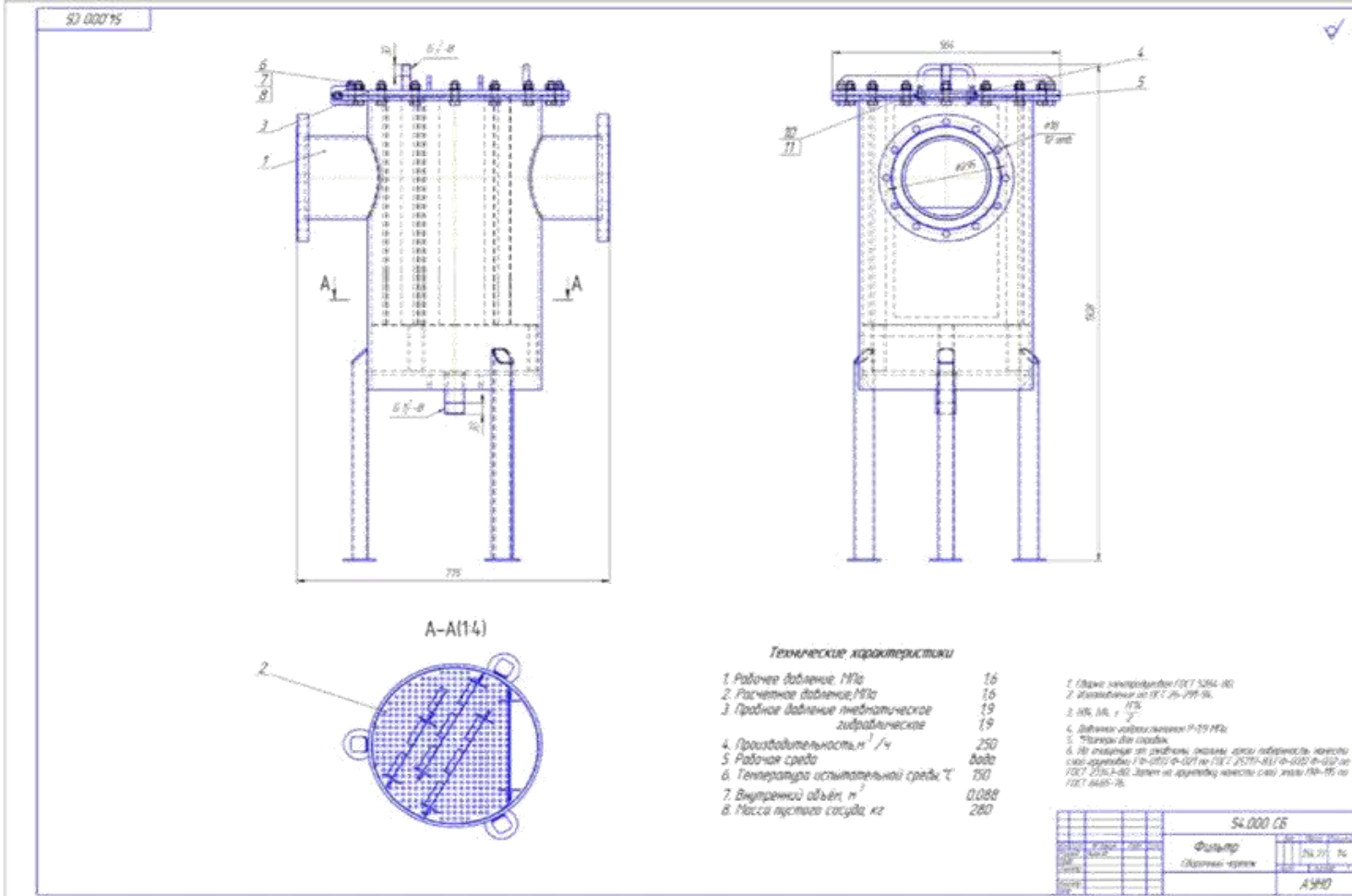
Made by Oleg Ushakov  
[Resume](#), [Cover Letter](#)

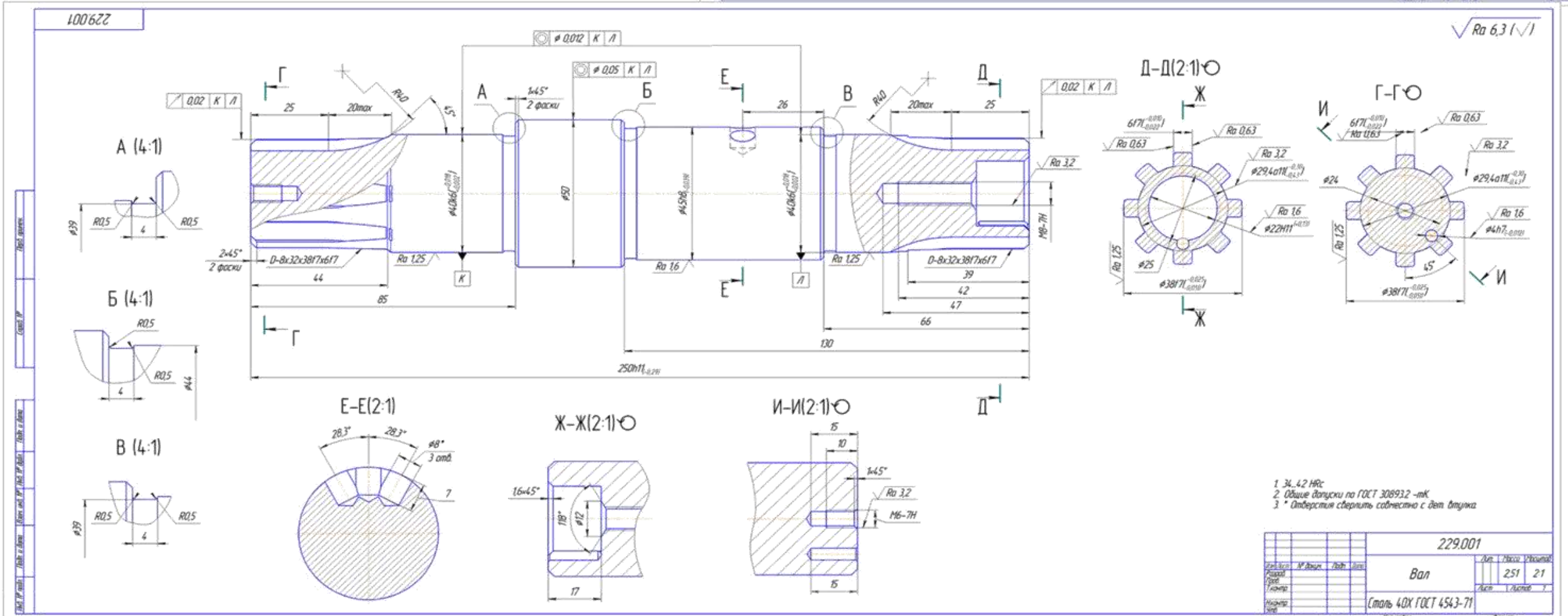
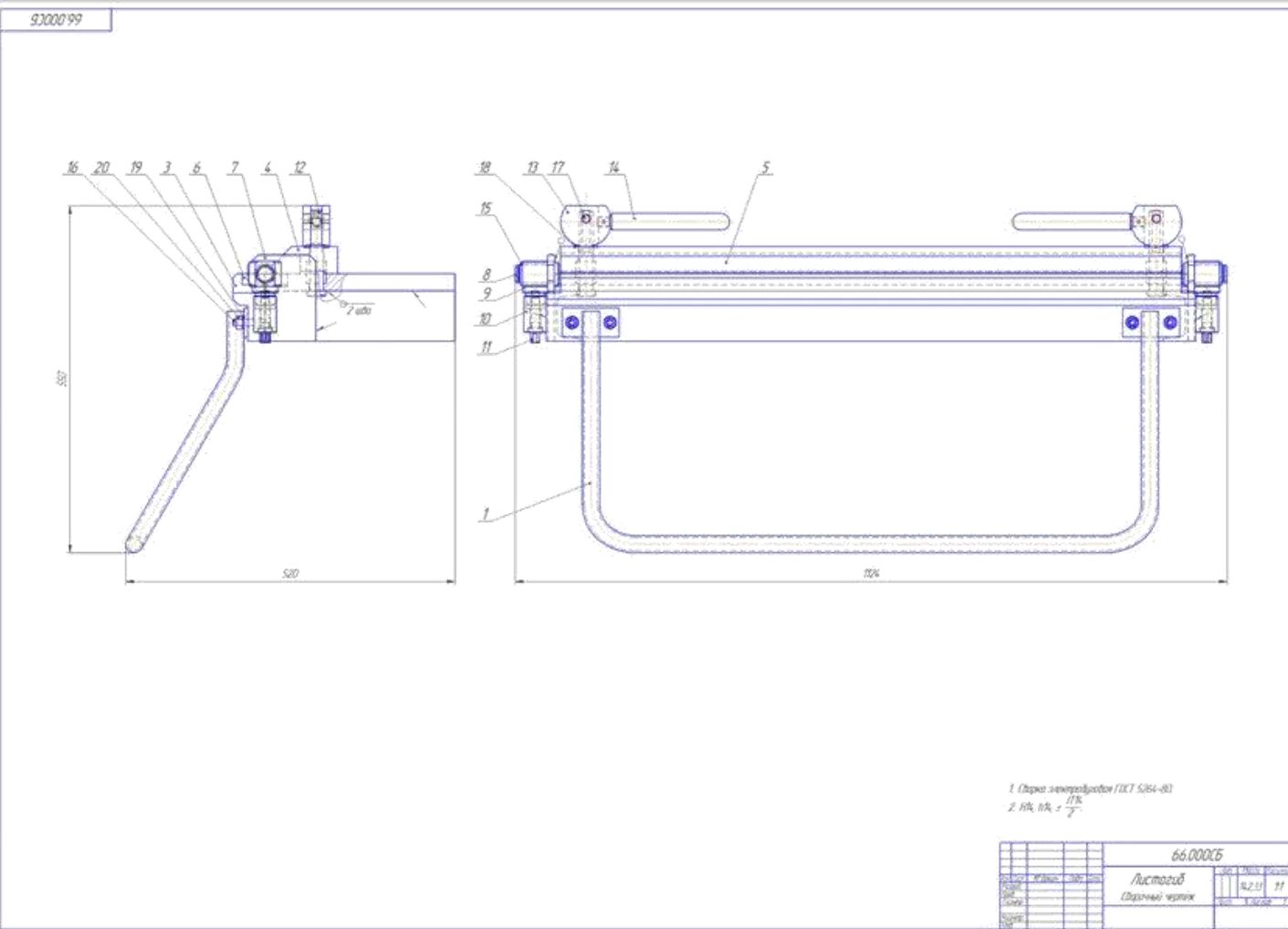
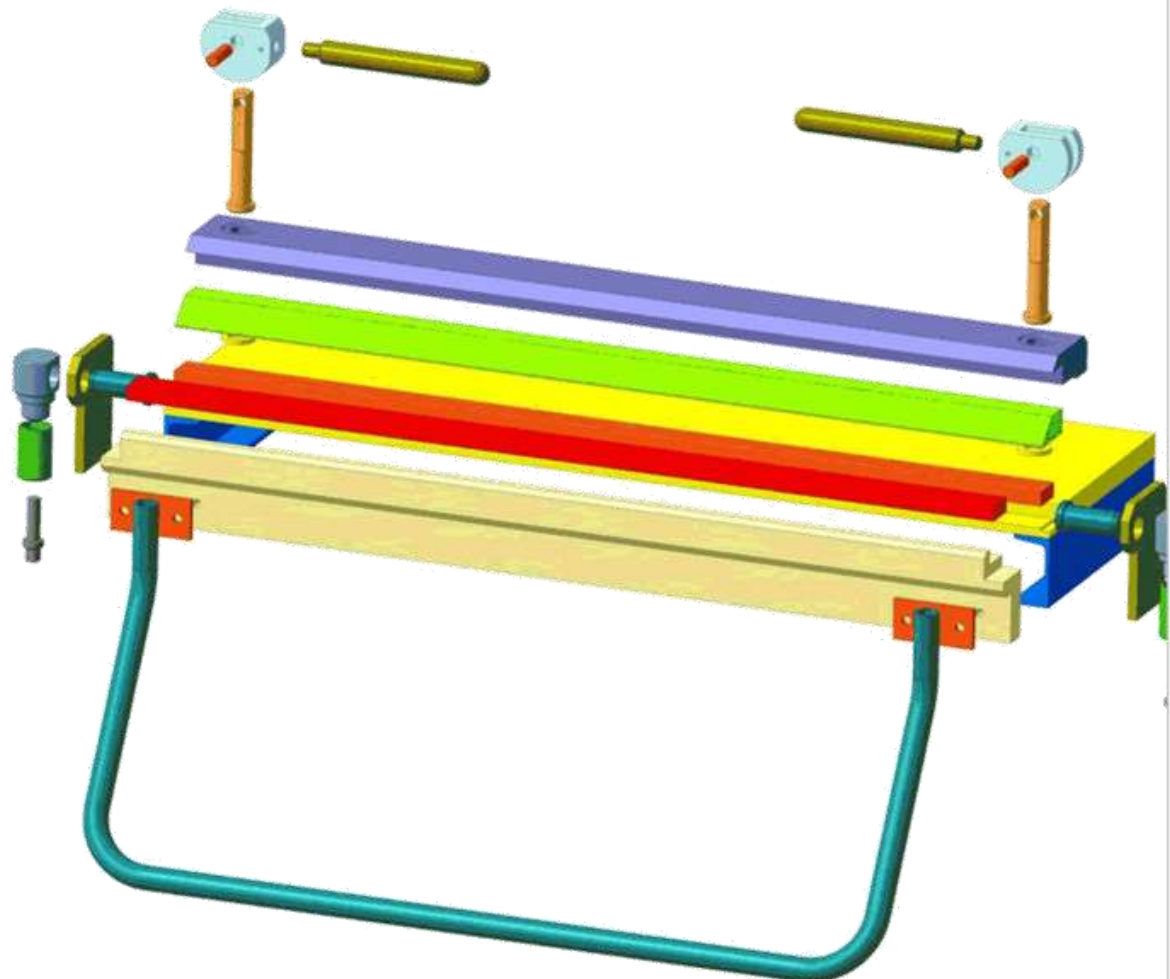
The addition for resume [part 2](#), [part 3](#)



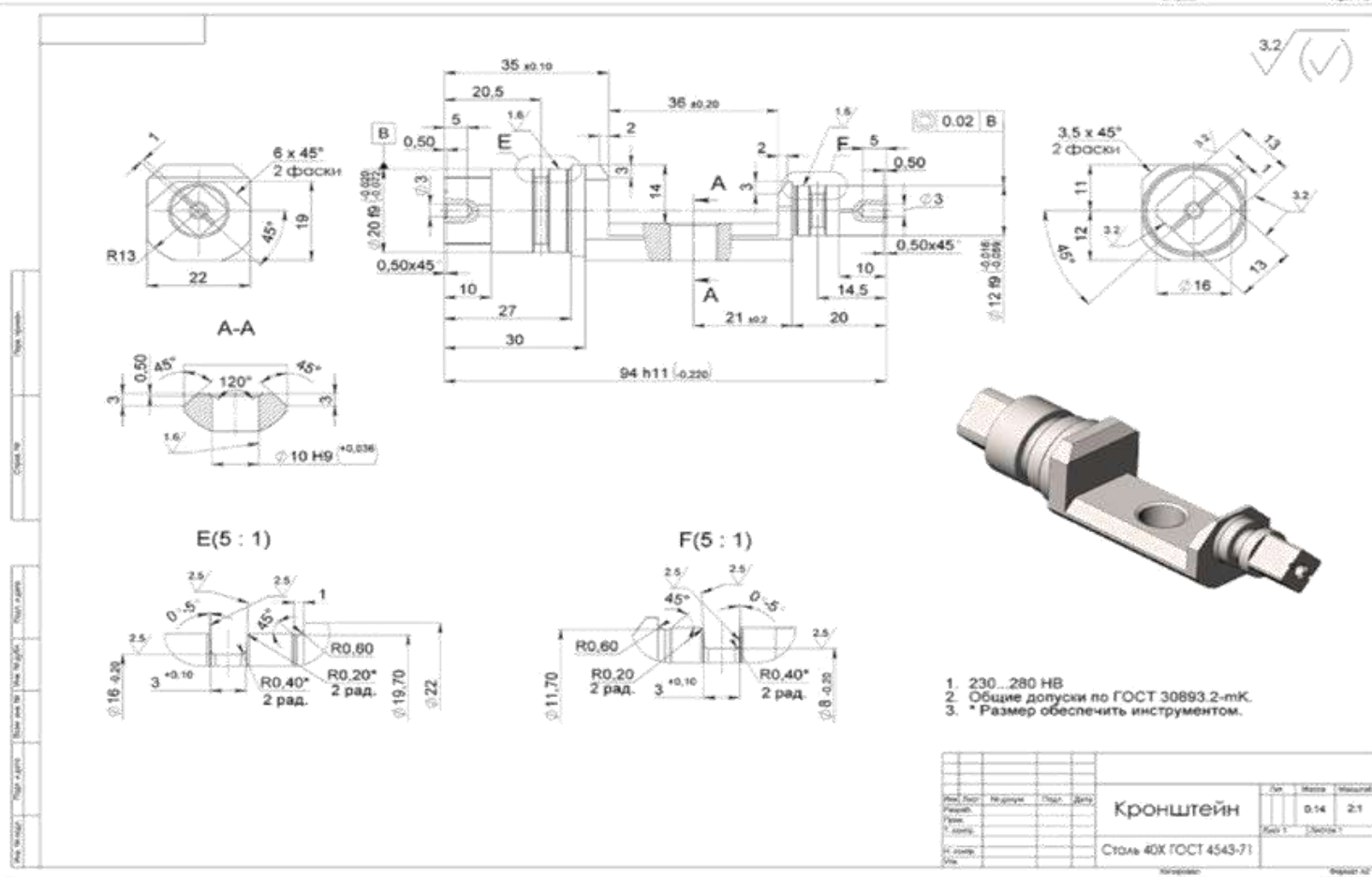
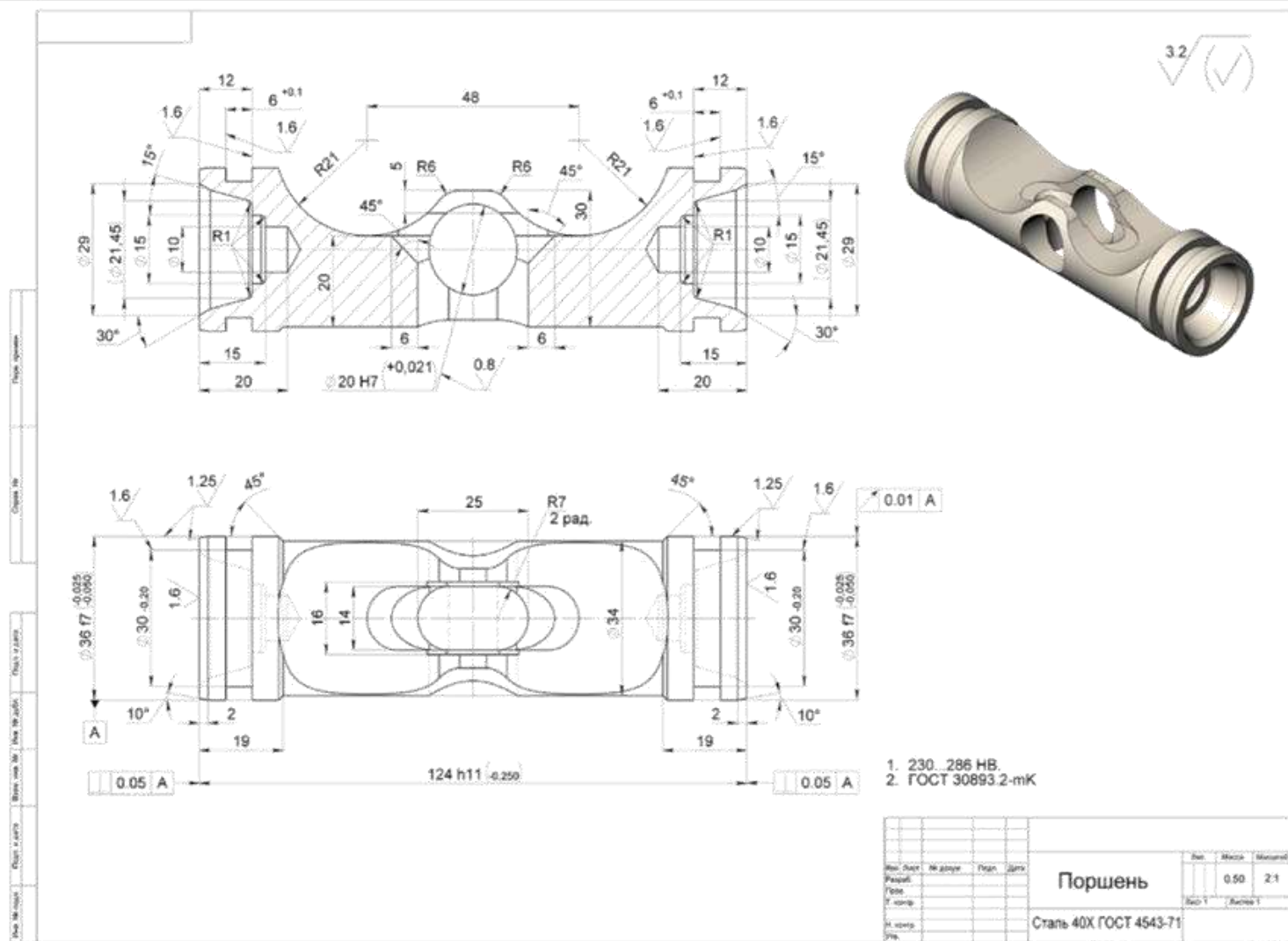


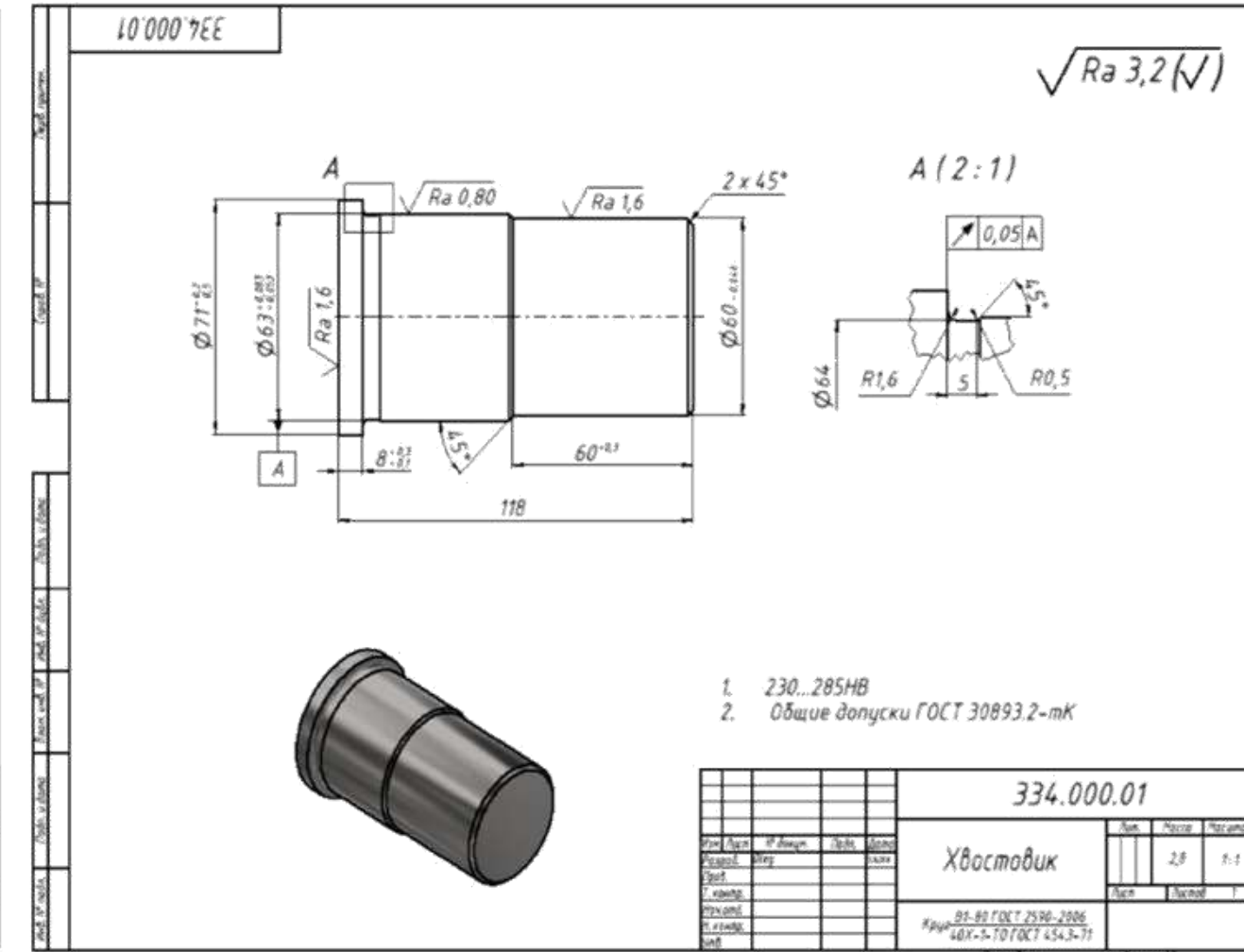
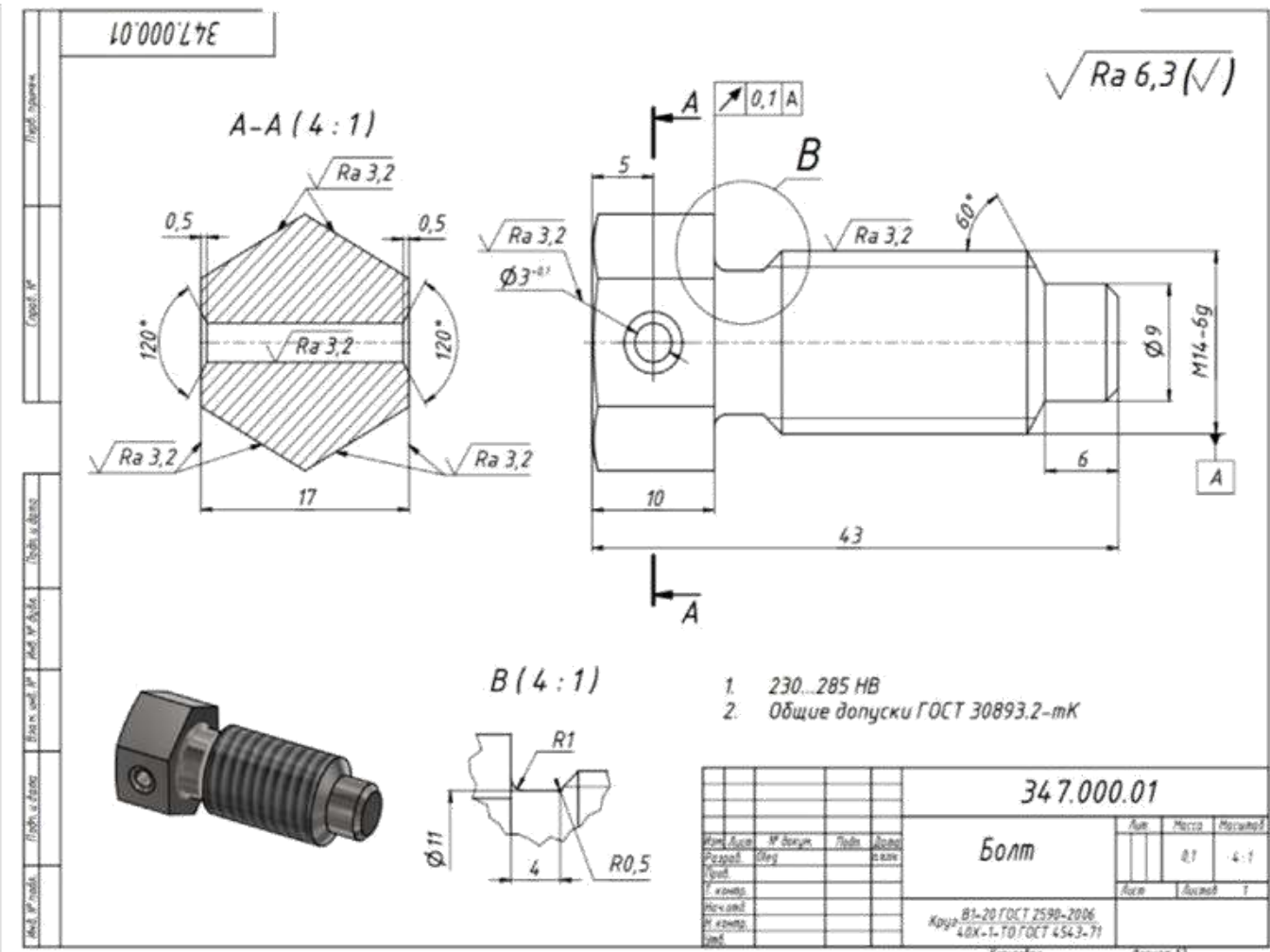
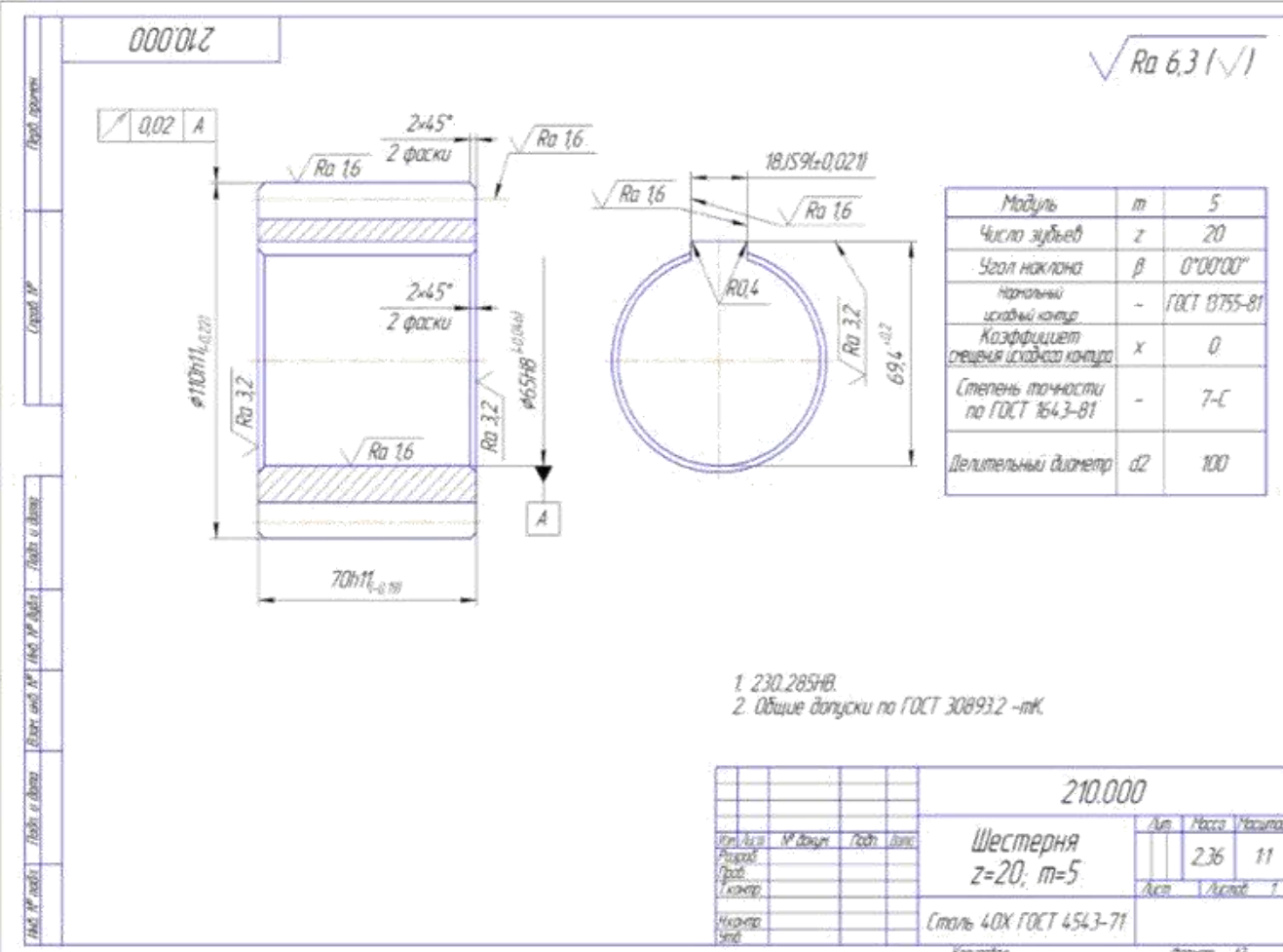
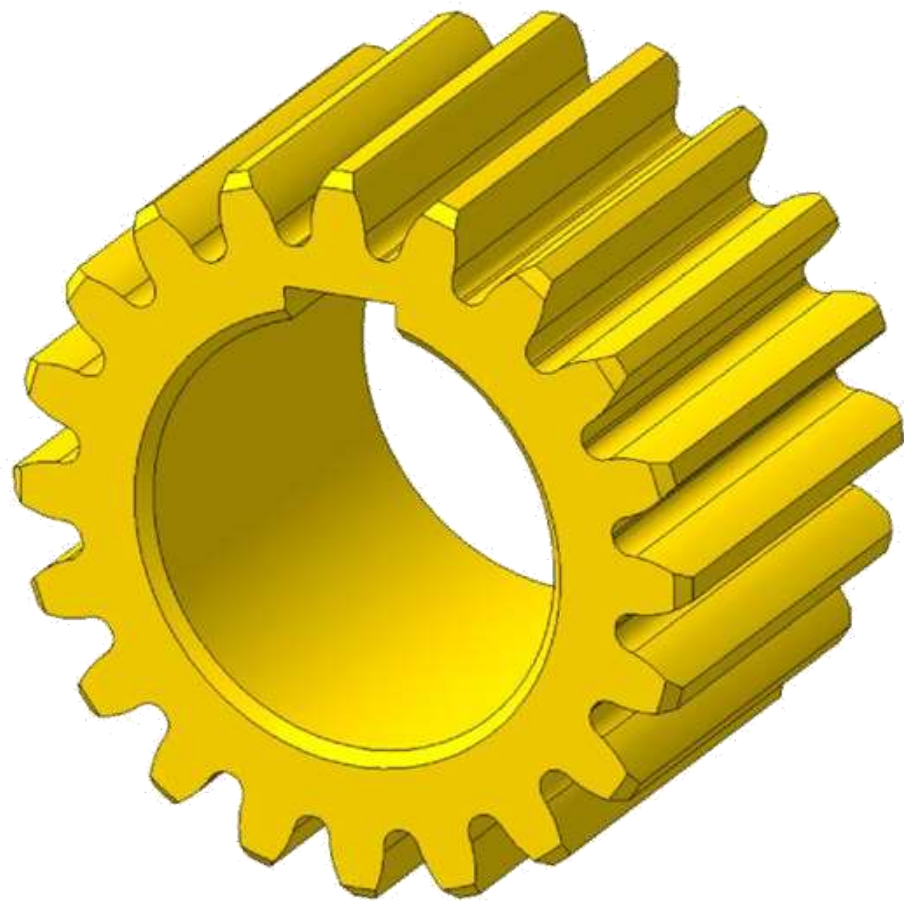




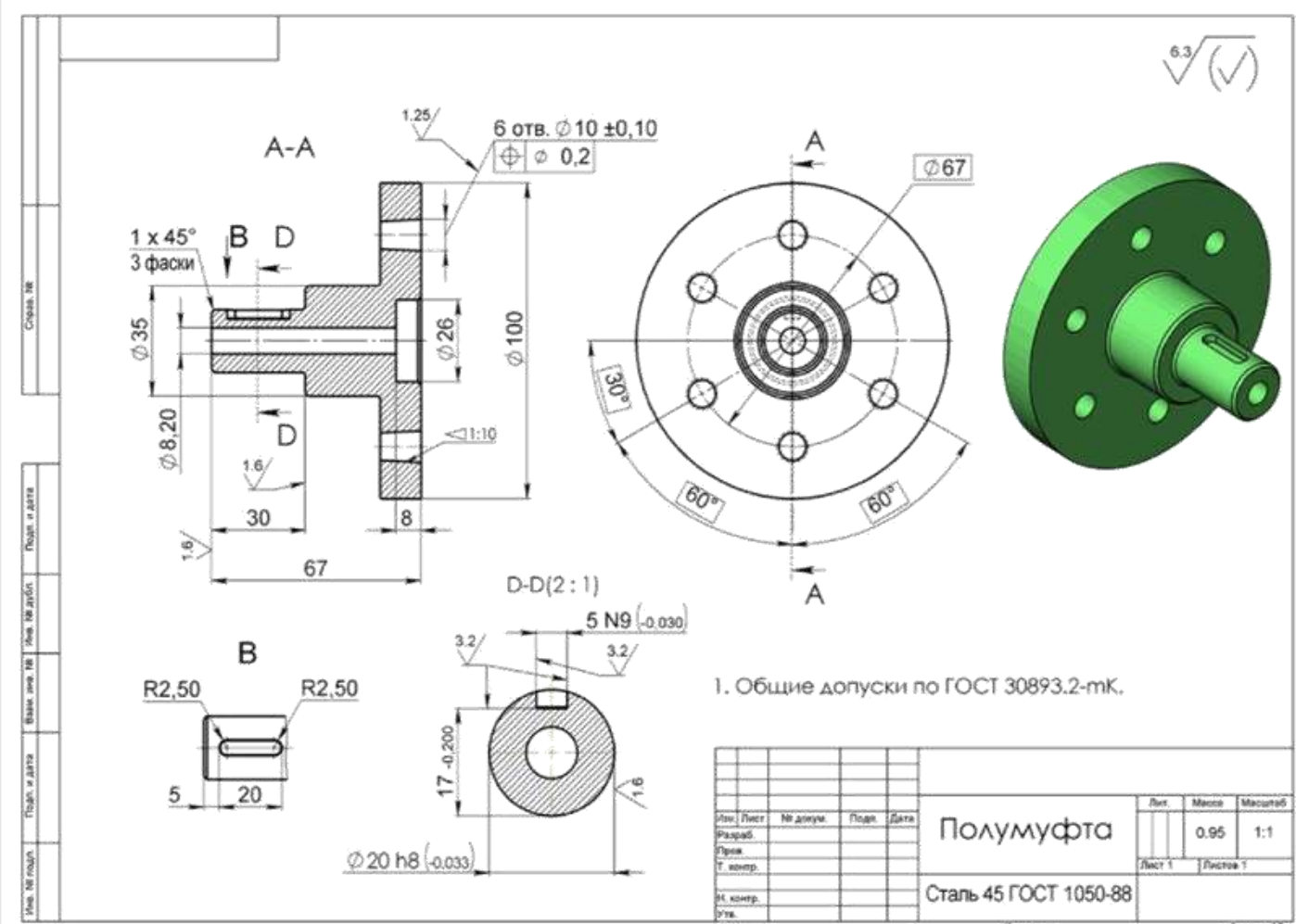
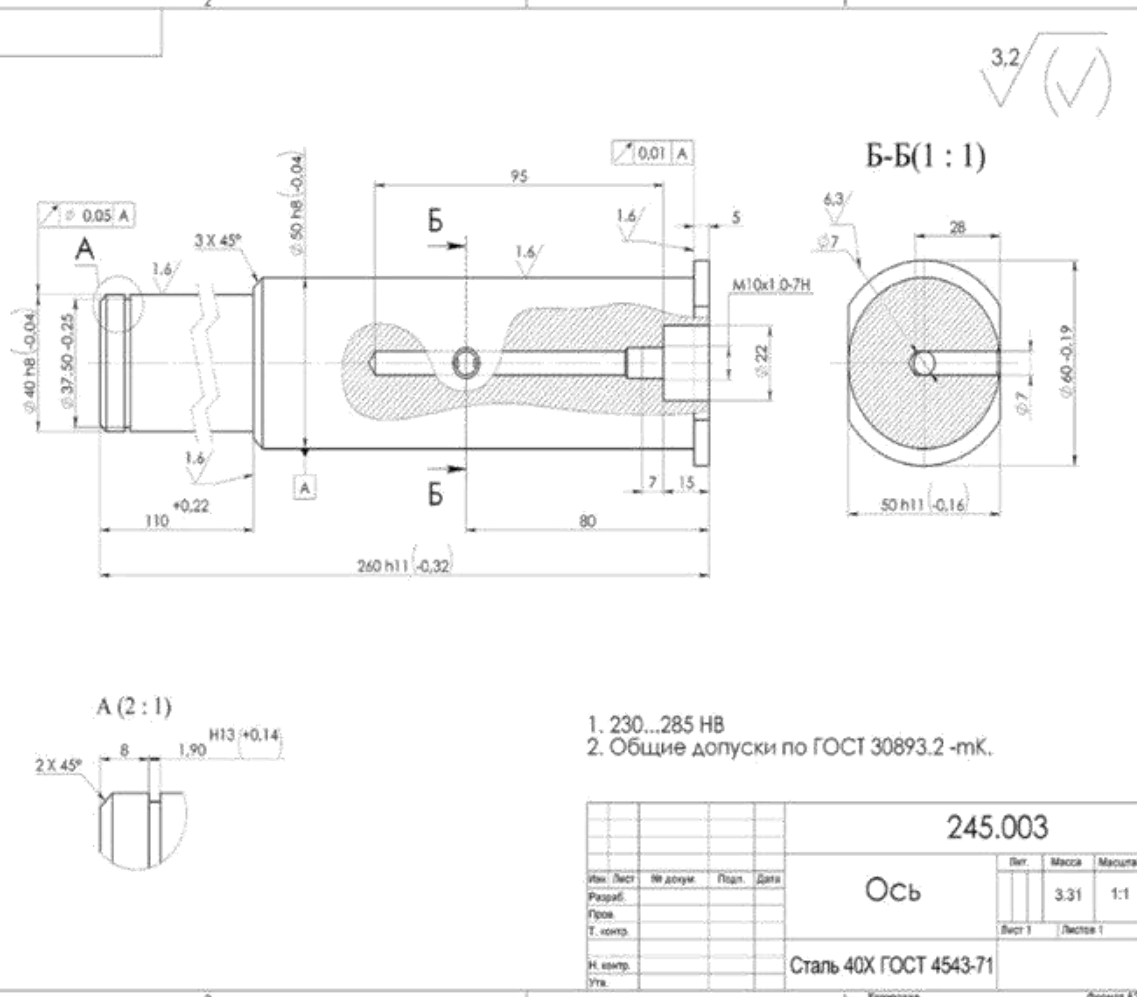
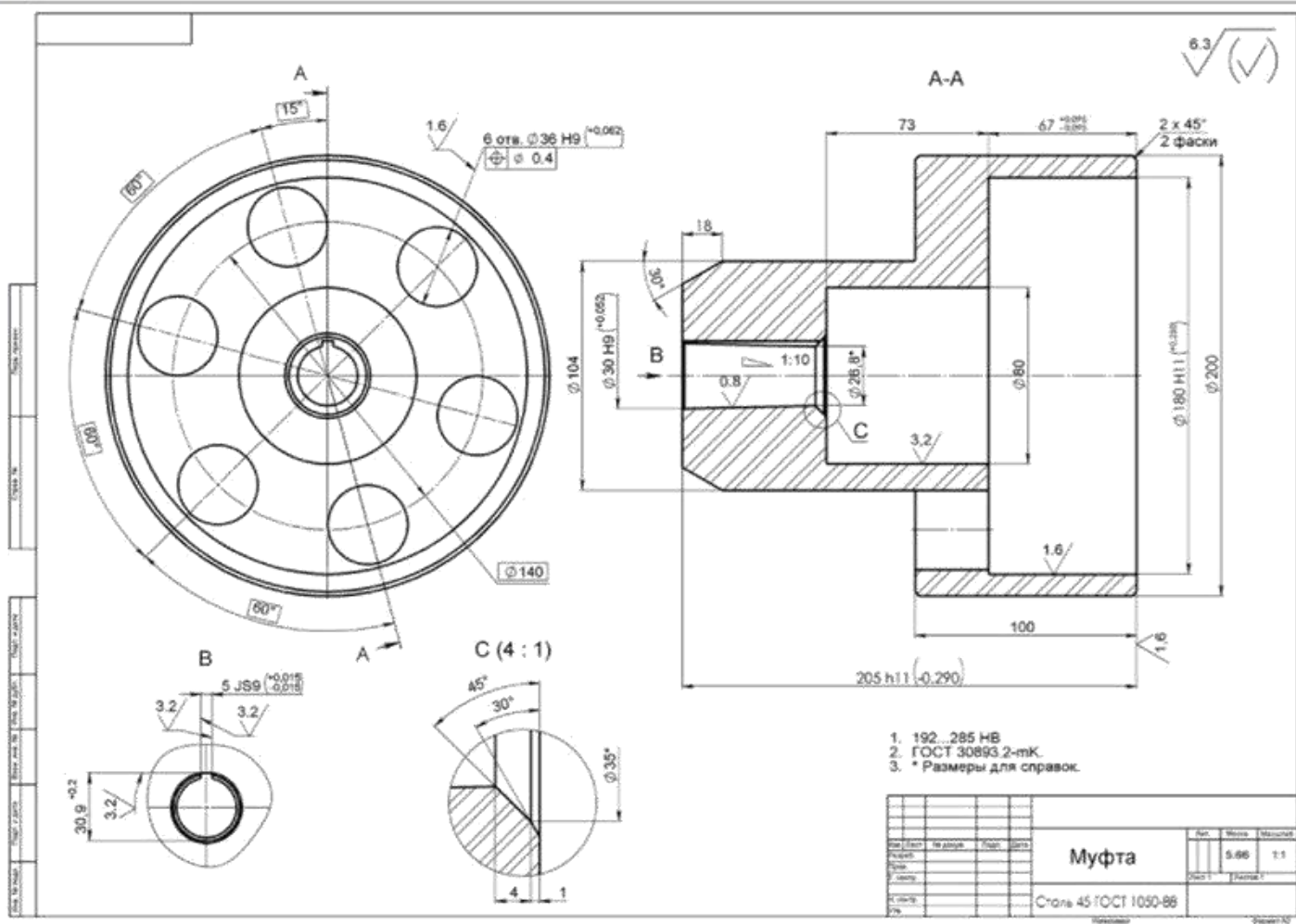




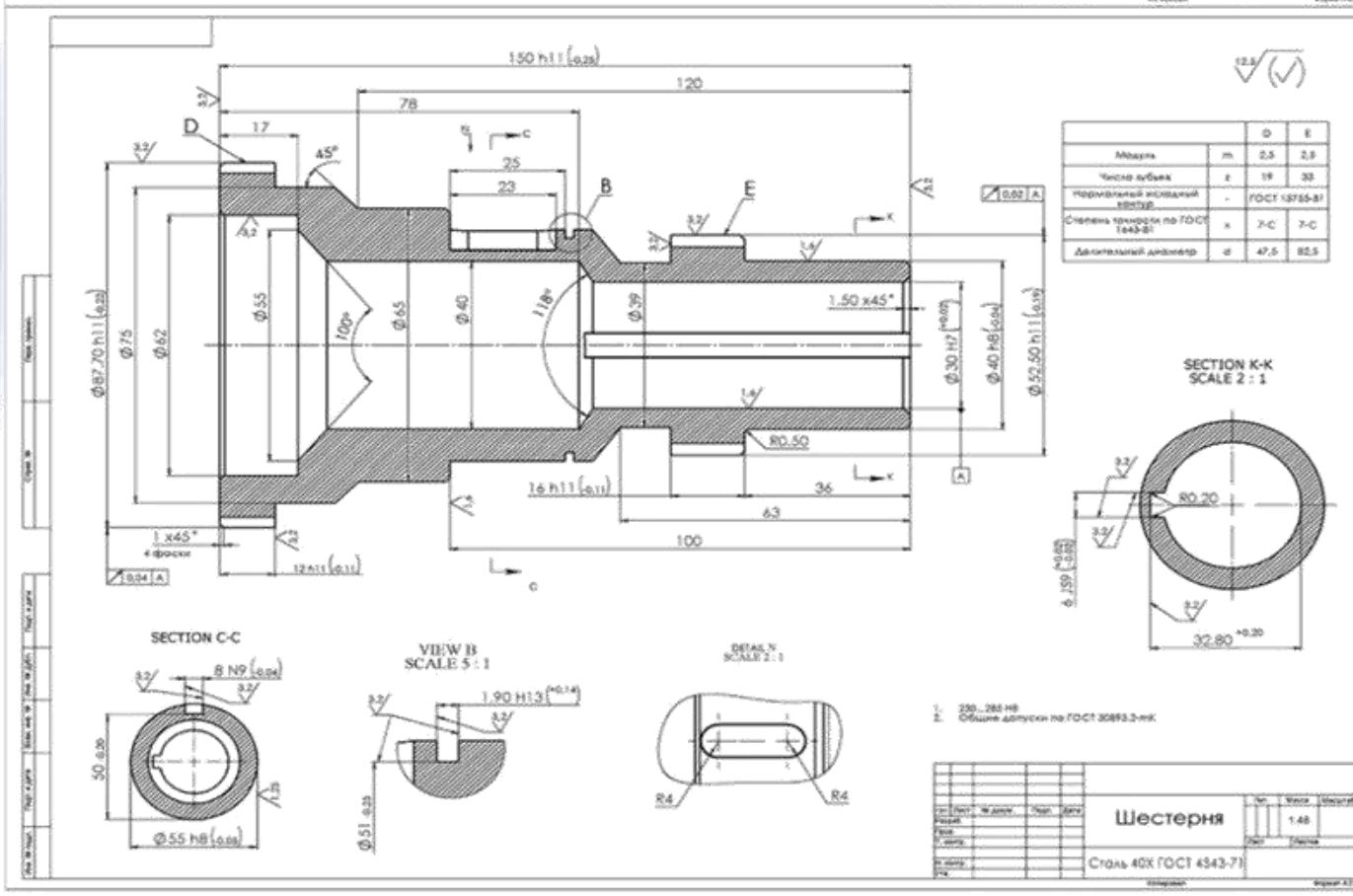
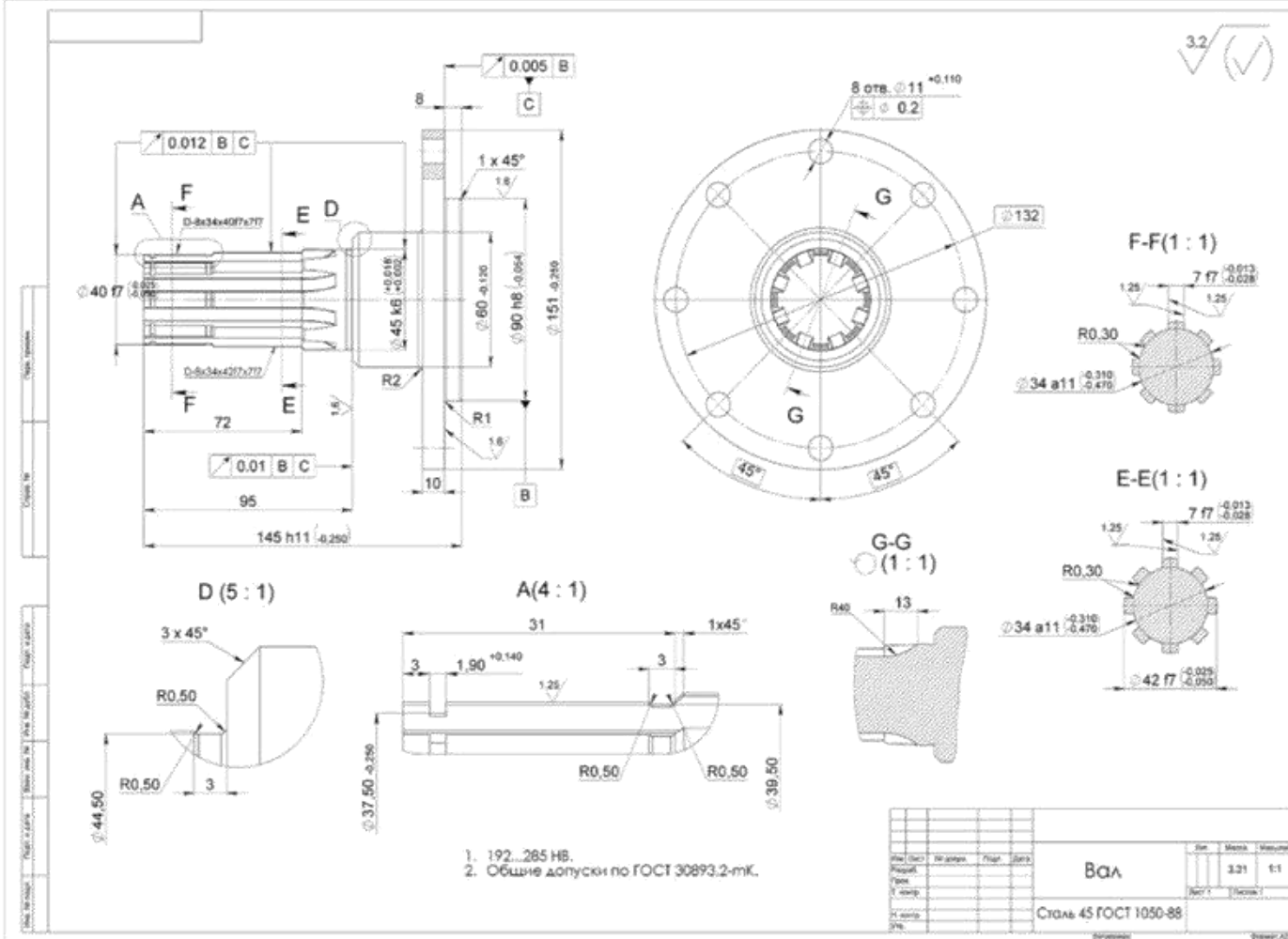
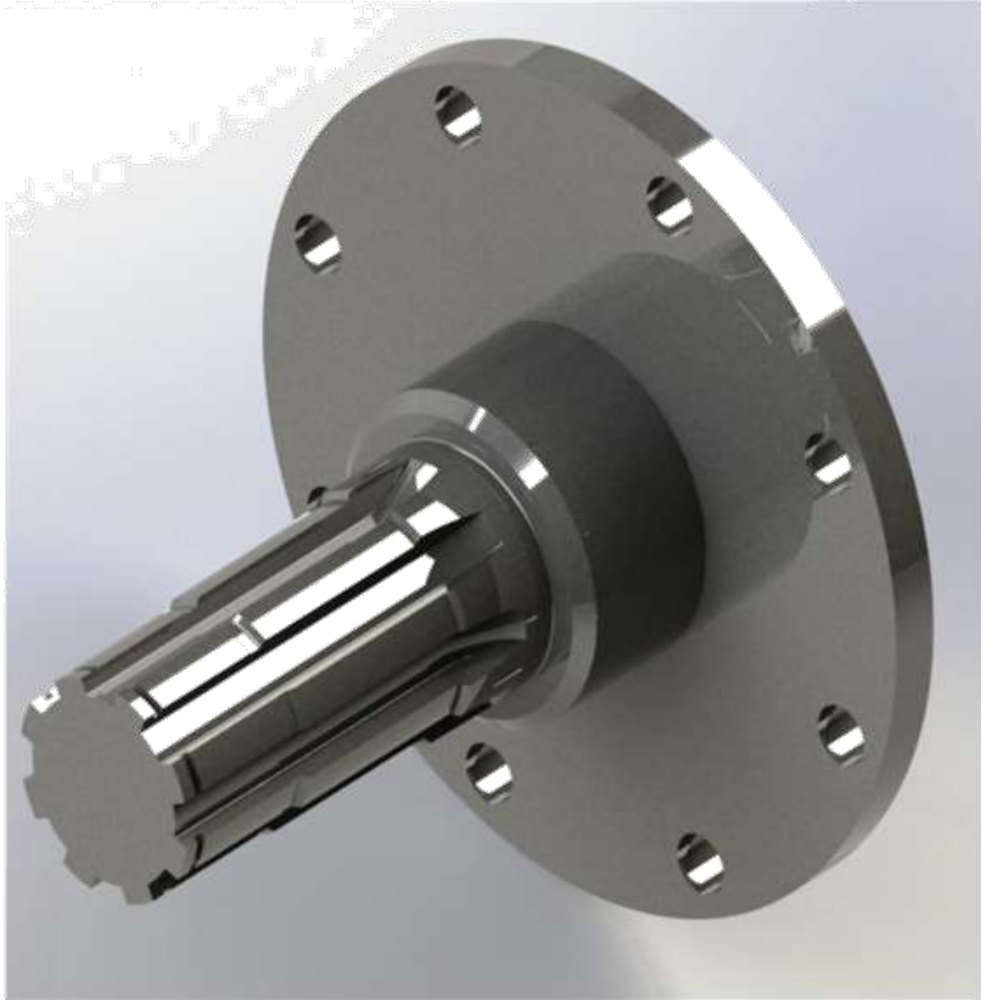






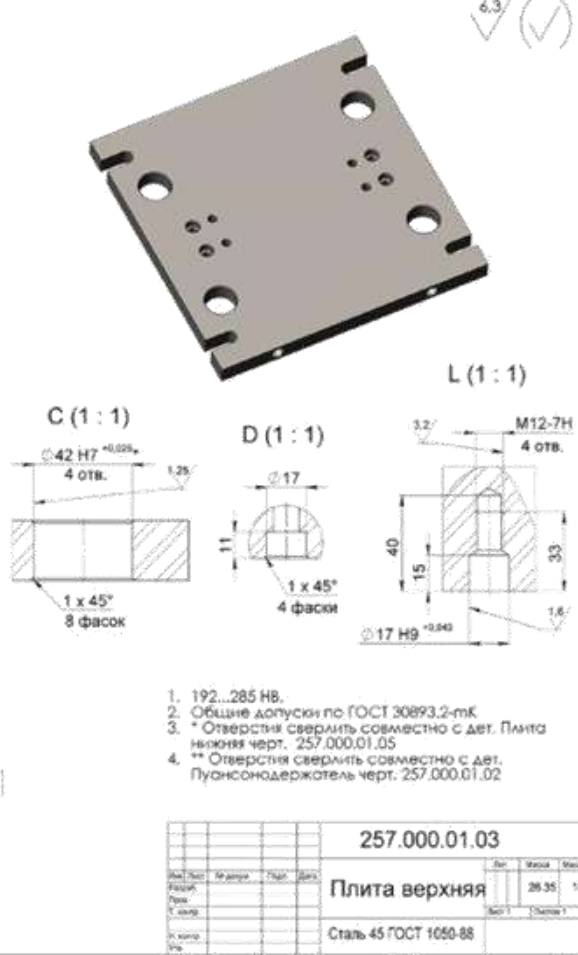
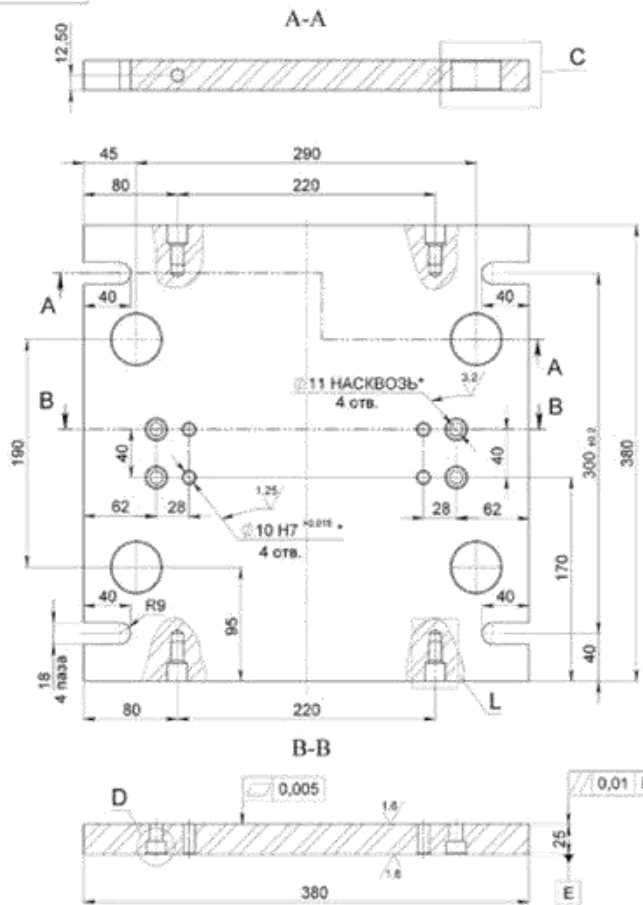






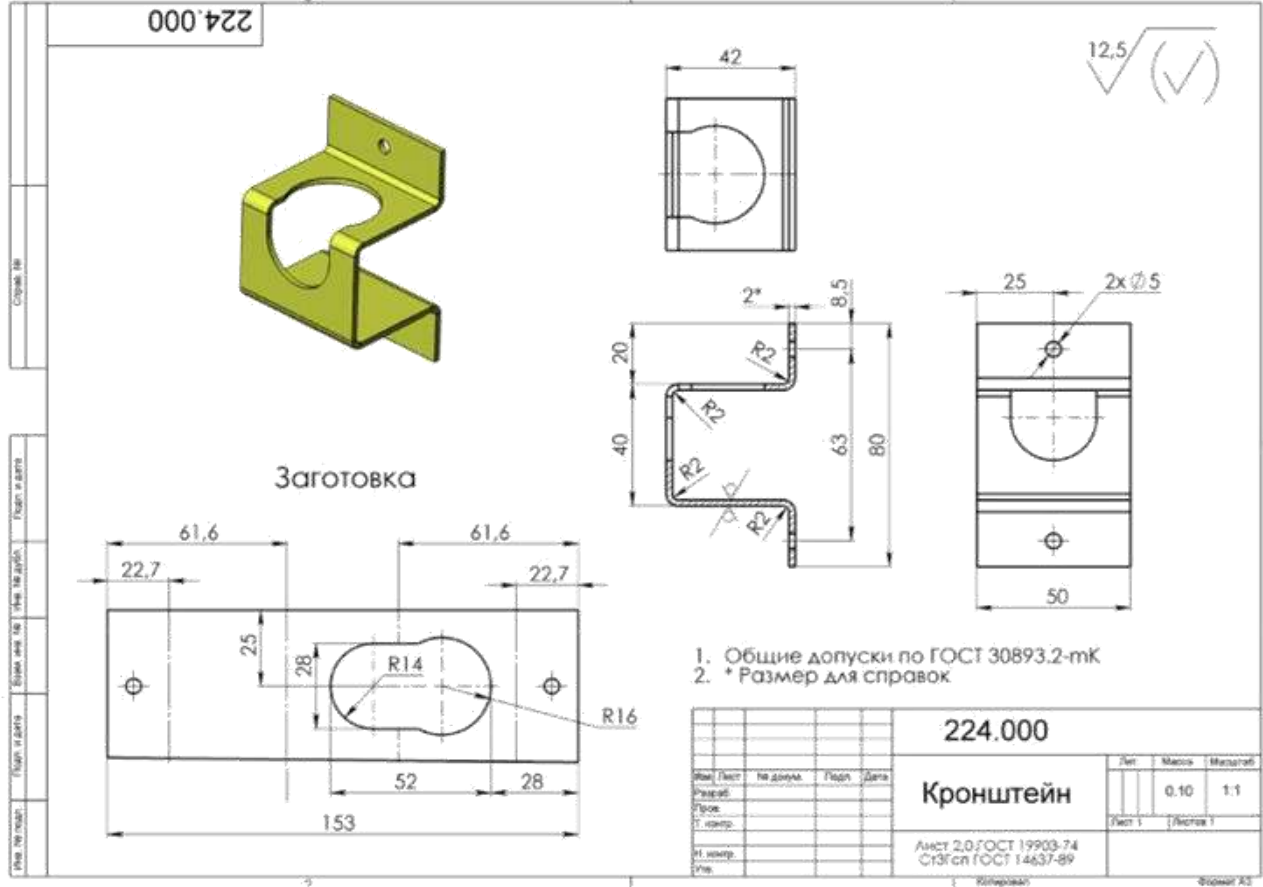






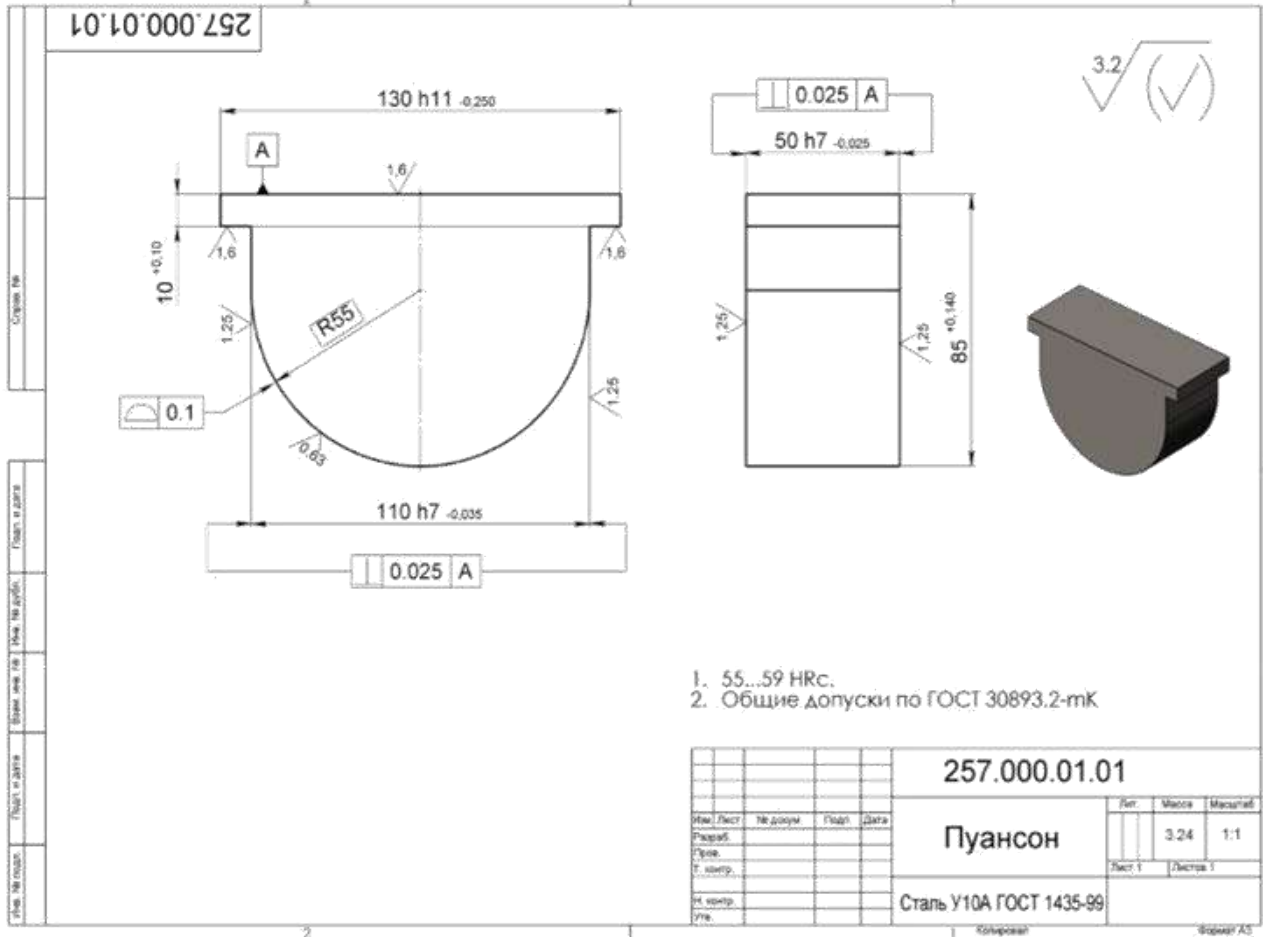
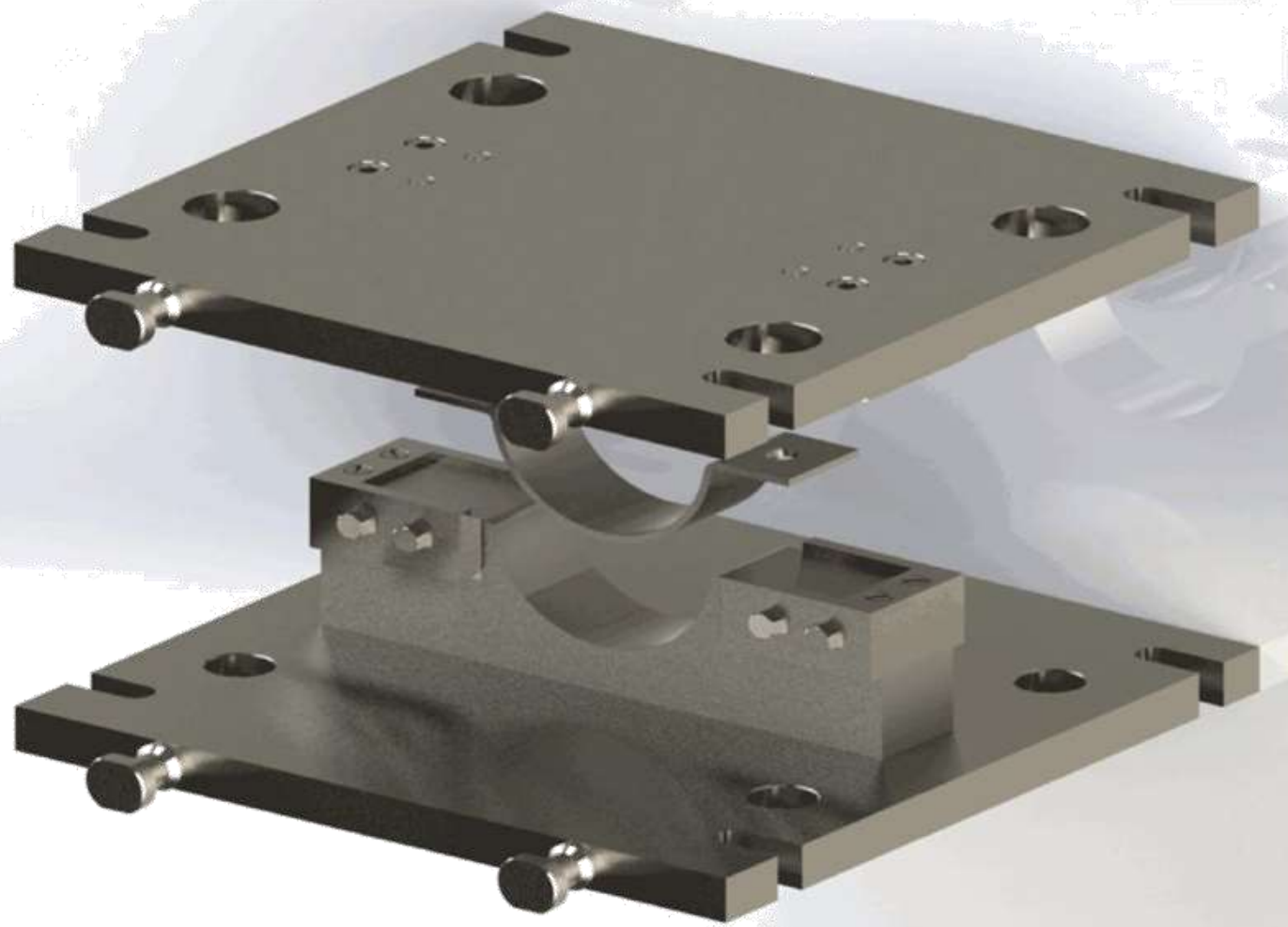
- 192...285 НВ.
- Общие допуски по ГОСТ 30893.2-мк
- \* Отверстия сверлить совместно с дет. Плита нижняя черт. 257.000.01.05
- \*\* Отверстия сверлить совместно с дет. Пуансонодержатель черт. 257.000.01.02

257.000.01.03		Лист	Масса	Масштаб
Плита верхняя		Лист	26.35	1:2
Сталь 45 ГОСТ 1050-88		Лист 1	Листов 1	



1. Общие допуски по ГОСТ 30893.2-мк
2. \* Размер для справок

224.000		Лист	Масса	Масштаб
Кронштейн		Лист	0.10	1:1
Анст 2.0 ГОСТ 19903-74 Стр 301 ГОСТ 14637-89		Лист 1	Листов 1	



- 55...59 HRC.
- Общие допуски по ГОСТ 30893.2-мк

257.000.01.01		Лист	Масса	Масштаб
Пуансон		Лист	3.24	1:1
Сталь У10А ГОСТ 1435-99		Лист 1	Листов 1	

